

Platform	Supported Minimums		Recommended Minimums		
	Windows	Macintosh	Windows		Macintosh
Operating System	XP	OS X 10.5.x	Vista	7	OS X 10.6.x
Processor	P4	G4	1 GHz 32-bit	1 GHz 32/64-bit	Intel
RAM	512	512	1 GB	1 GB (with 32-bit) 2 GB (with 64-bit)	1 GB
Java Plug-in	Java 1.5	Java 1.4.2	Java 1.5	Java 1.5	Java 1.5
Internet Browsers	Please refer to the Supported Browser/OS Combinations section.				
Adobe Flash	Adobe Flash Player 10.X or higher is required for use of the Data Analysis tool and the Online Payments (Portal) premium product on all Campus-supported platforms.				
Adobe Reader	Infinite Campus does not support the use of Adobe Reader on platforms that are not supported by the third-party product vendors. Note to Macintosh Users: <ul style="list-style-type: none"> • FDFs do not work for users on OS X 10.6+ using Safari 5.1+ unless Adobe Reader is updated to 10.1.3 or higher. • Firefox use is not supported. Please use Preview. • Camino use is not supported. 				

Minimum Supported Browser/OS Combinations

The following table displays supported combinations of operating systems and browsers for general use of Infinite Campus software. Only versions of the browser equal to or greater than the versions listed in the table are supported.

 Please see the [Recommended Browser Settings](#) for more information on browser configurations.

OS /Browser	IE 7.0	Firefox 4.0.x	Safari 5.x
Windows			
XP	E.x 2013M.x	E.x 2013M.x	
Vista	E.x 2013M.x	E.x 2013M.x	
7	E.x 2013M.x	E.x 2013M.x	
Mac OS X			
10.5.0 (Intel) 10.5.5		E.x 2013M.x	E.x 2013M.x
10.6.x		E.x 2013M.x	E.x 2013M.x
10.7.x		E.x 2013M.x	E.x 2013M.x

Mobile and Tablet Browsers


General mobile and tablet browsing is available on devices capable of HTML. Functionality available will vary depending on the device’s specific capabilities, but usually includes basic student contact information, student schedules, posted grades, teacher attendance, behavior, transportation and Portal access. Some devices may show additional features.

⊖ Due to the numerous inconsistencies between mobile and tablet operating systems, devices and browsers, Infinite Campus cannot guarantee comprehensive support for mobile and tablet browsing.

Campus Mobile Portal is an iOS and Android application available with the **E.1138 Release Pack** and will work on iOS (Apple) devices and Android devices (NOT BlackBerry or Windows-based mobile phones). The following devices are supported:

Device	Minimum Operating System
Android	2.2 and later
iPod Touch	4.2.1 <i>Second generation and newer</i>
iPhone 3G	4.2.1

iPhone 3GS	4.2.1+
iPhone 4	4.2.1+
iPad	4.2.1+
iPad 2	4.2.1+

 First generation of iPhone and iPod Touch is not supported.

Supported DBMS and Application Servers

This section indicates the versions of Database Management Systems (DBMS) and application servers supported for general use of Infinite Campus software.

Application Server	SQL Server 2005 (64-bit) Compatibility 90	SQL Server 2008 (64-bit) Compatibility 100
Apache Tomcat v. 6.0 with Java 1.6 (32/64-bit)	E.x 2013M.x	E.x 2013M.x

Supported Platforms for Campus Premium Products

This section contains requirements for Campus Premium Product add-on features that may not apply to all users.

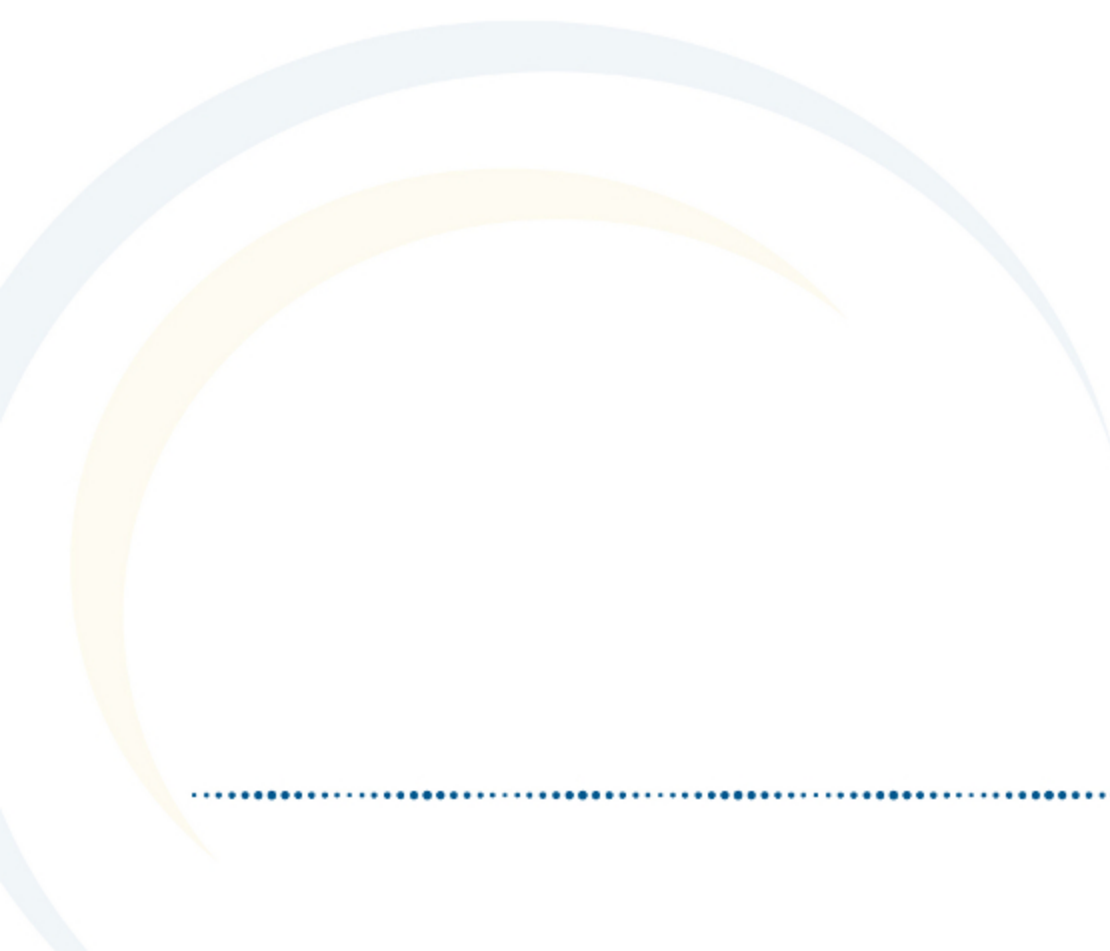
Campus Premium Product	Supported Platform / Minimum Requirements	Campus Version
POS Terminals using Windows OS (POSReady 2009)	See the Point of Sale Terminal Minimums Section below.	E.x 2013M.x NOTE: Elo terminals require Campus version .1126 or higher.
Online Payments (Portal)	Adobe Flash Player 10.1	E.x 2013M.x
Finance and Human Resources	Adobe Flash Player 10.1	E.x

Point of Sale Terminal Minimums

The following table indicates the minimum operating requirements and recommendations for use of Campus Food Service on Point of Sale terminals:

Recommended Browser Settings

August 2012



This document is intended for restricted use only.

Infinite Campus asserts that this document contains proprietary information that would give our competitors undue advantage should they come into possession of any part or all of it. As such, this document cannot be publicly disclosed unless so ordered by a court of competent jurisdiction.

©2012 Infinite Campus, Inc. All rights reserved.


INFINITE CAMPUS and Transforming K12 Education are registered trademarks of Infinite Campus, Inc. The INFINITE CAMPUS logo is a trademark of Infinite Campus, Inc. This publication, or any part thereof, may not be reproduced or transmitted in any form or any means, electronic or mechanical, including photocopying, recording, storage in an information retrieval system, or otherwise, by anyone other than Infinite Campus, Inc. without written permission of Infinite Campus, Inc., 4321 109th Avenue NE, Blaine, MN 55449, tel. (651) 631-0000, email info@infinitecampus.com.

Recommended Browser Settings

[Overview](#) | [Internet Explorer Settings \(PC\)](#) | [Mozilla Firefox Settings \(PC\)](#) | [Mozilla Firefox Settings \(Mac\)](#) | [Safari Settings \(Mac\)](#) | [Previous Versions](#)


Overview

Infinite Campus recommends modifying certain browser settings for optimal use of Infinite Campus software. Browsers should be kept current by applying service packs and updates as provided by the operating system. Infinite Campus currently supports Internet Explorer and Mozilla Firefox browsers on a PC platform. Mozilla Firefox, Safari and Camino browsers are supported on the Macintosh platform.

 Infinite Campus cannot guarantee full support of all browsers or all versions. Please see the [Supported Platforms](#) page for more up-to-date information on browser and platform support.

Internet Explorer Settings (PC)

For the most recent browser versions that are supported in Campus, see the [Supported Platforms](#) article.

 The names and locations of settings may vary slightly across versions (the following were based off of IE 8 on a Windows environment).

To access the browser settings, navigate to the Tools menu and select **Internet Options**.

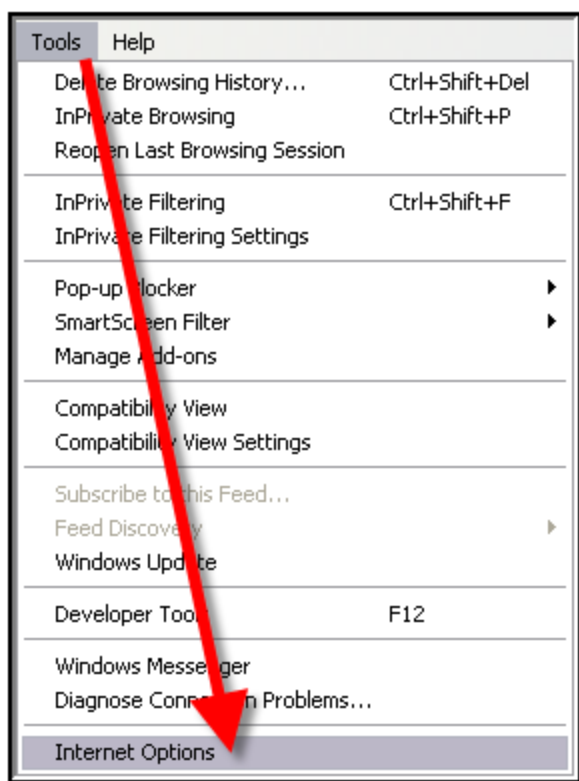


Image 1. Internet Explorer Tools Menu

The following settings are recommended:

General Settings

On the General tab:

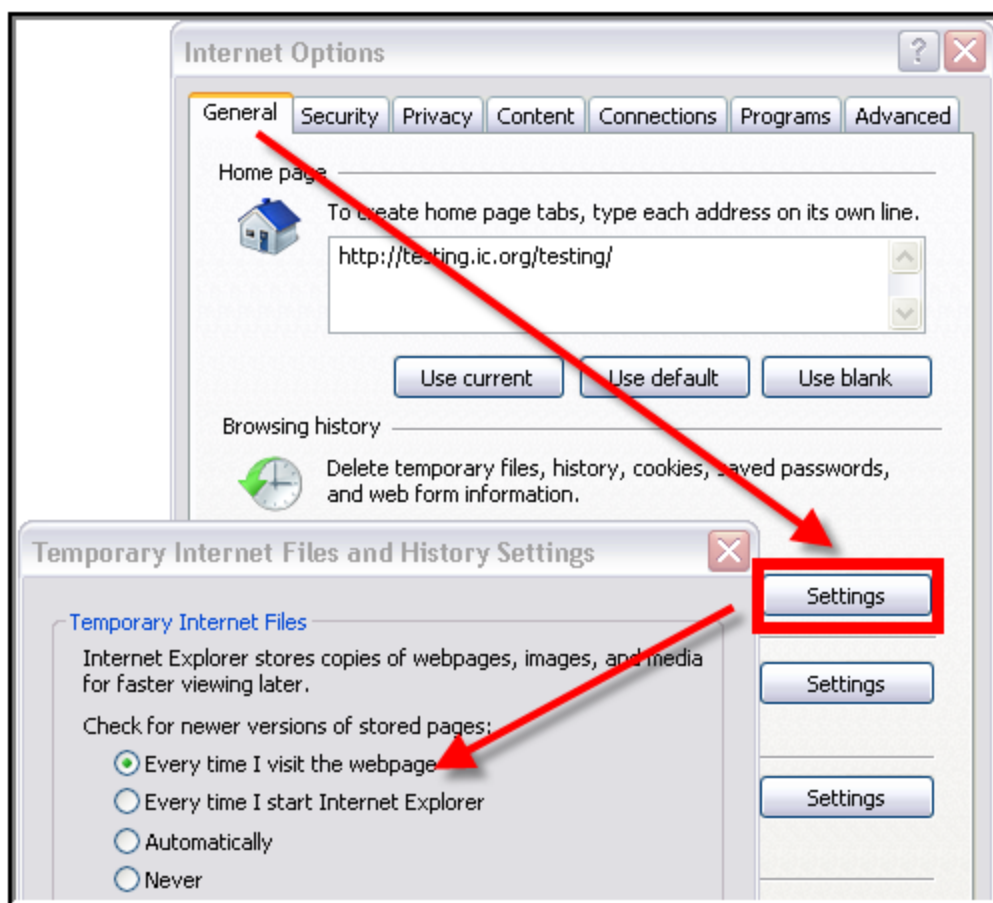


Image 2. General Settings for Temporary Files (IE)

1. Click the **Settings** button of the Browsing History section.
2. On the Temporary Internet Files dialog box, set the Check For Newer Versions of Stored Pages option to **Every Time I Visit the Webpage**.
3. Click **OK**.

Security Settings

On the Security tab, several settings are applicable.

Trusted Sites

Set Infinite Campus as a trusted site:

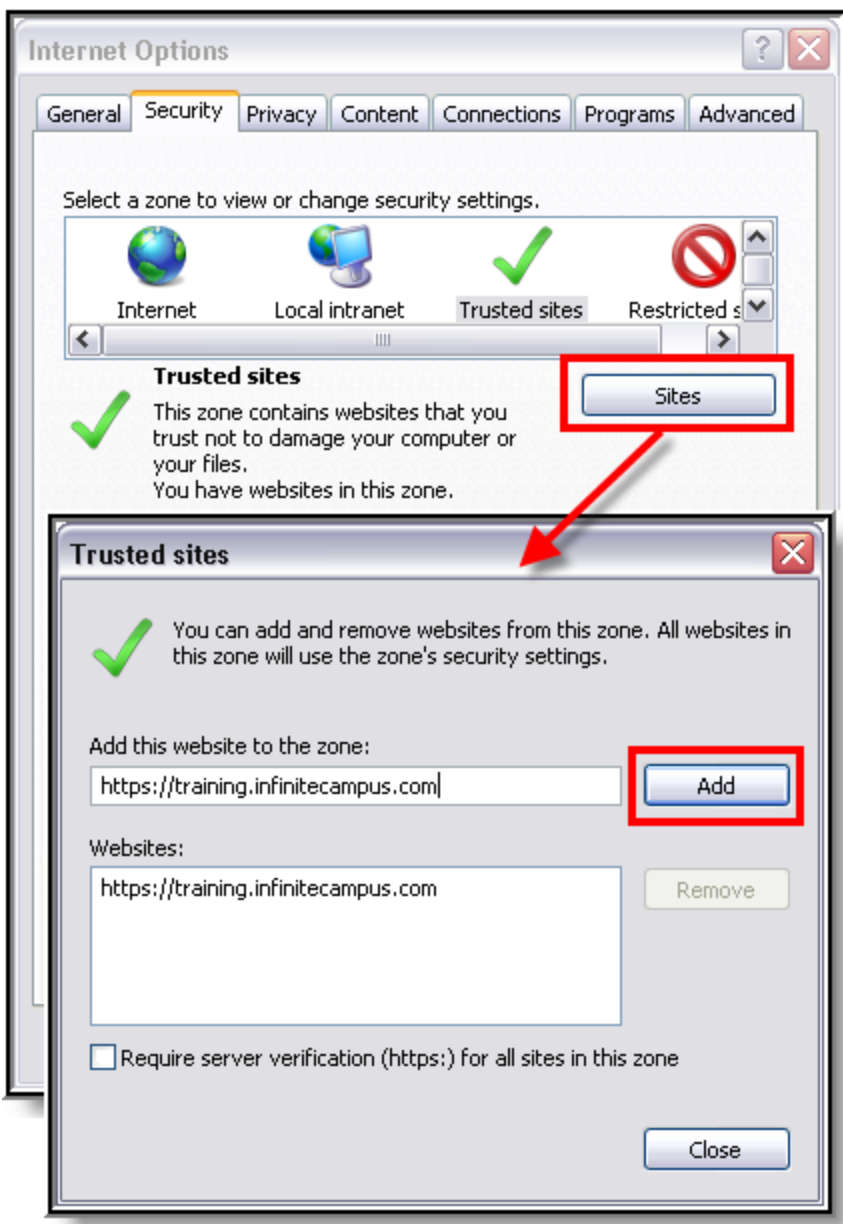


Image 3. Security Settings for Trusted Sites

1. Select the **Trusted sites** icon from the "Select a zone..." box.
2. Click **Sites**.
3. If not automatically displayed, enter the URL address of the Campus application in the **Add this website to the zone** field.
4. Click **Add**.
5. Verify that the address appears in the **Website** box.
6. If the site is not a secure site - indicated by an "https" in the URL - remove the mark from the **Require server verification (https:) for all sites in this zone** checkbox.
7. Click **Close** on the Trusted Sites window to return to the Security tab.

Downloads

On the Security tab, configure the download settings:

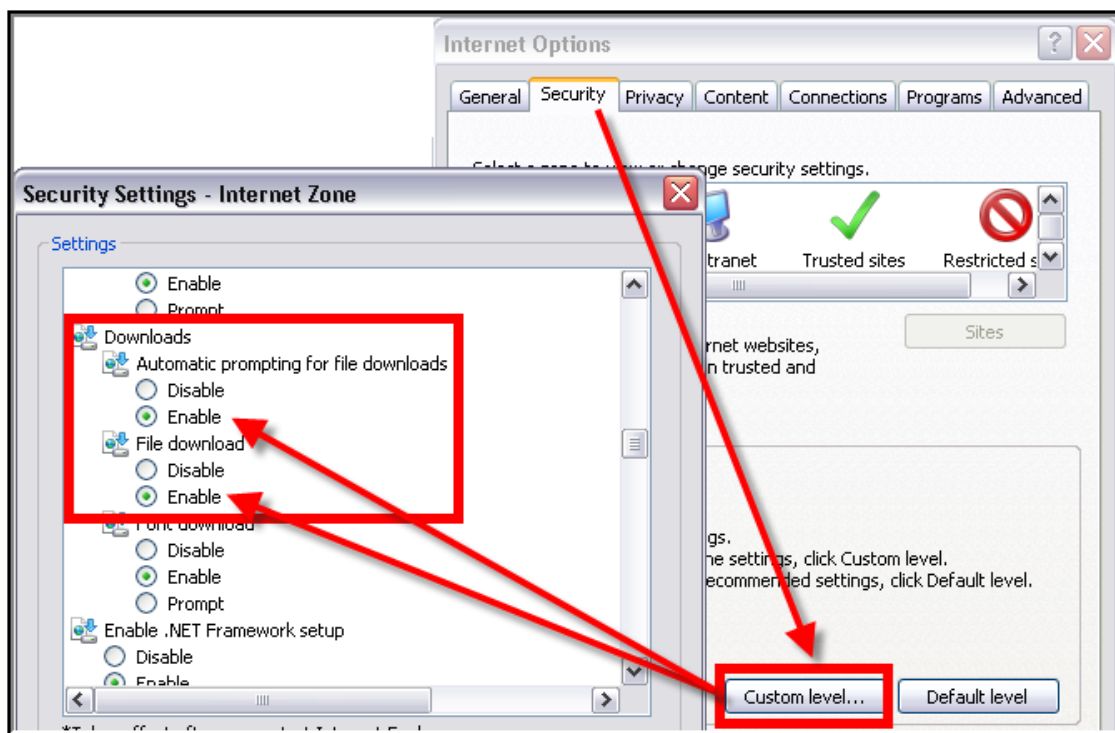


Image 4. Security Settings for Downloads (IE)

1. Click the **Custom Level** button.
2. Locate the Downloads section. Enable both the **Automatic Prompting for File Downloads** and the **File Download** options.

SmartScreen Filter

While still in the Security Settings window, turn off the SmartScreen Filter for the zone:

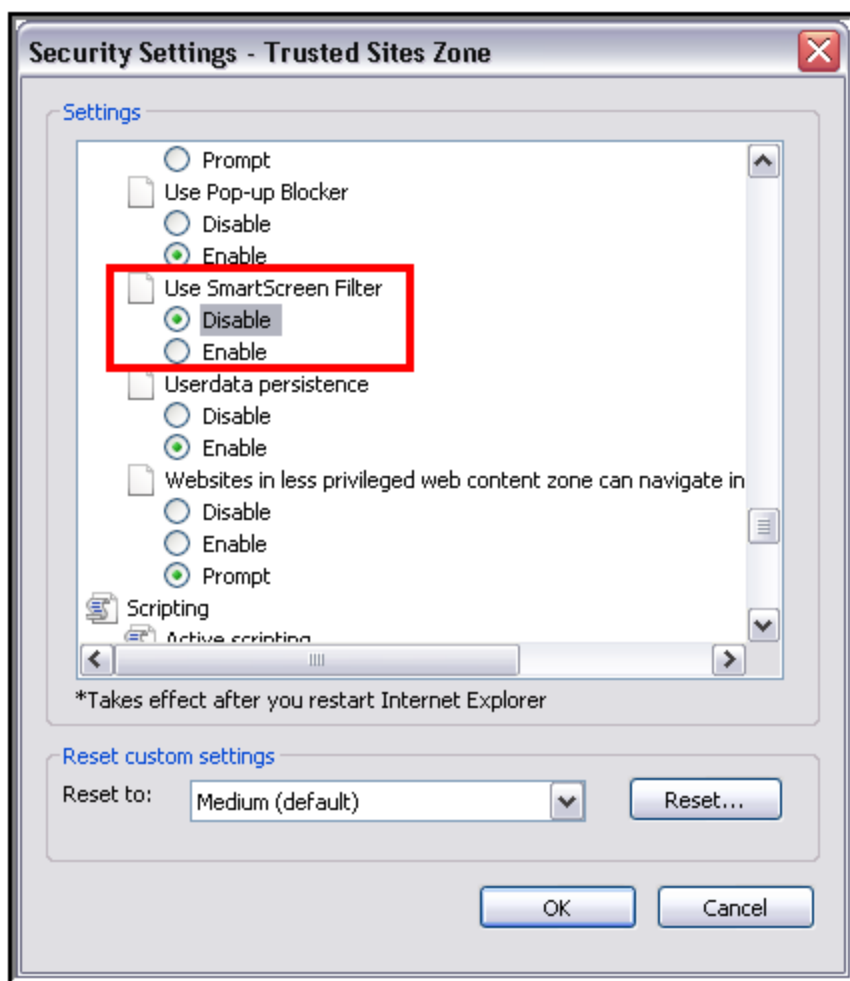


Image 5. Miscellaneous Security Settings (IE)

1. Toward the bottom of the list, under "Miscellaneous," **Disable** the SmartScreen Filter.
2. Click **OK**.
3. On the verification window, click **Yes**.

Privacy Settings

On the Privacy tab:

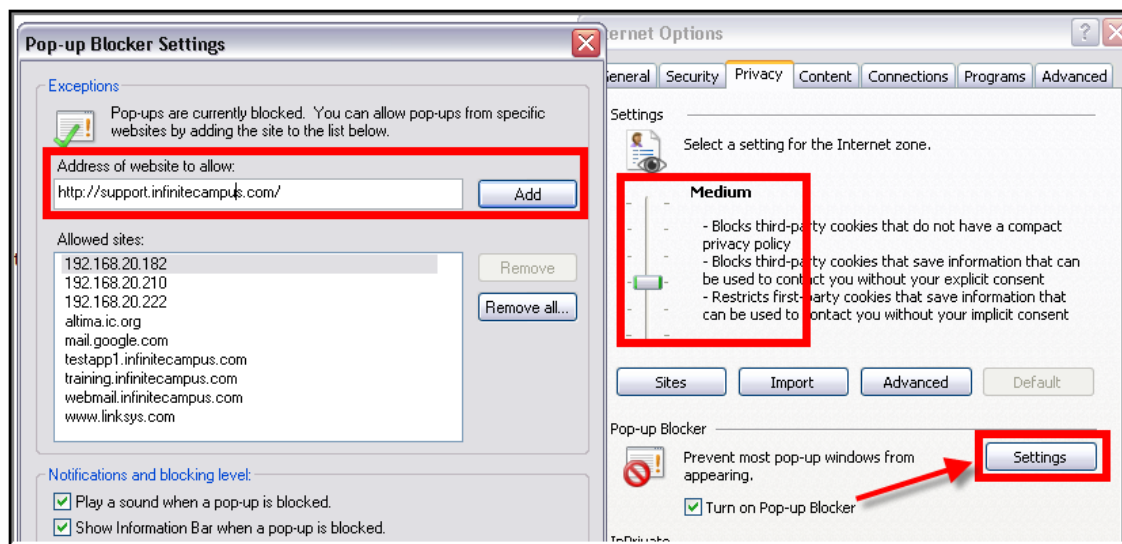


Image 6. Privacy Settings for Pop-Ups (IE)

1. The privacy setting for the Internet zone should be set to **Medium**.
2. The Pop-up Blocker section should allow pop-ups to the Infinite Campus site in one of the following manners:
 - The **Turn On Pop-Up Blocker** checkbox is not marked (allowing all pop-ups from all sites), **OR**
 - The **Turn On Pop-Up Blocker** checkbox is marked, but the Infinite Campus website is allowed:
 - a. Click the **Settings** button.
 - b. Enter the URL of the Campus application in the **Address of website to allow** field.
 - c. Click **Add**.
 - d. Verify that the address just added now appears in the **Allowed Sites** list.
 - e. Click **Close**.
3. Click **OK**.

Content Settings

On the Content tab:

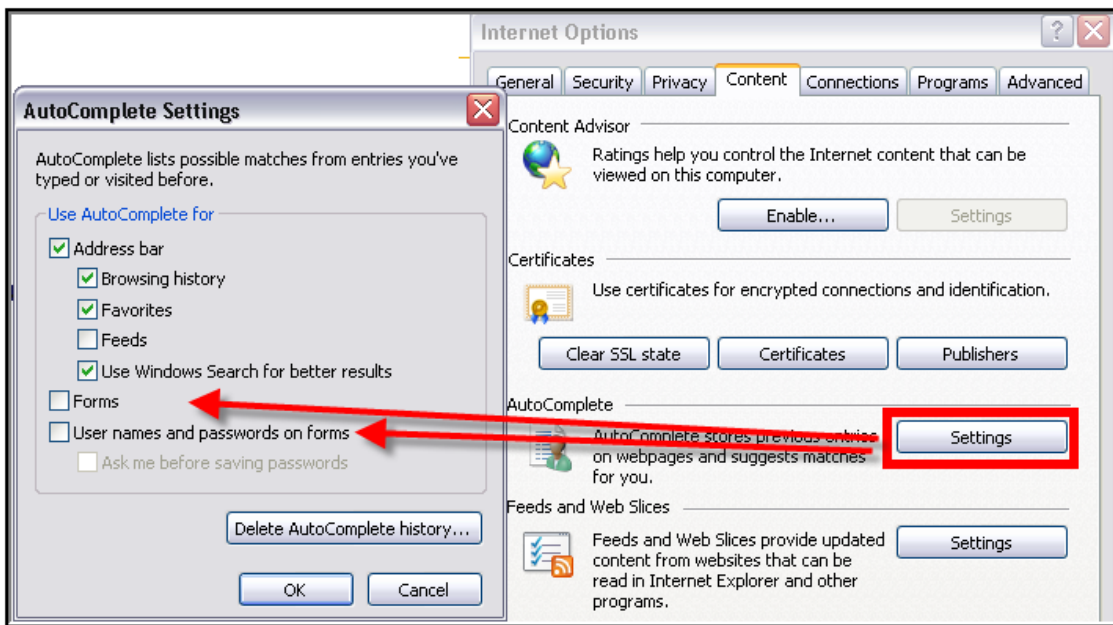


Image 7. Content Settings for Auto-Complete (IE)

1. Click the **Settings** button of the AutoComplete section.
2. On the AutoComplete Setting dialog box, remove marks from the **Forms** and **User Names and Passwords On Forms** checkboxes.
3. Click **Delete AutoComplete History**.
4. Click **OK**.

Advanced Settings

On the Advanced tab, there are several settings to configure.

Auto-Complete

Turn off auto-complete:

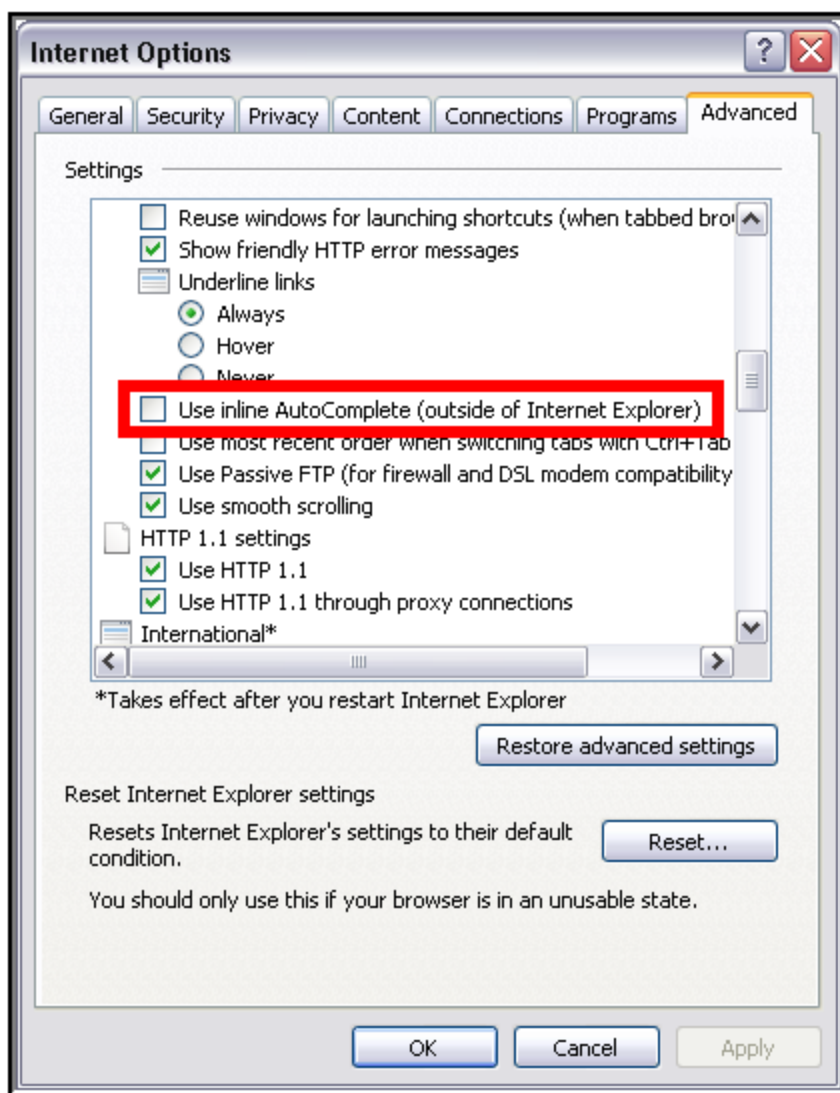


Image 8. Advanced Settings for Browsing (IE)

Under the Browsing settings, unmark the **Use Inline AutoComplete** checkbox.

Java

Set JRE for Java:

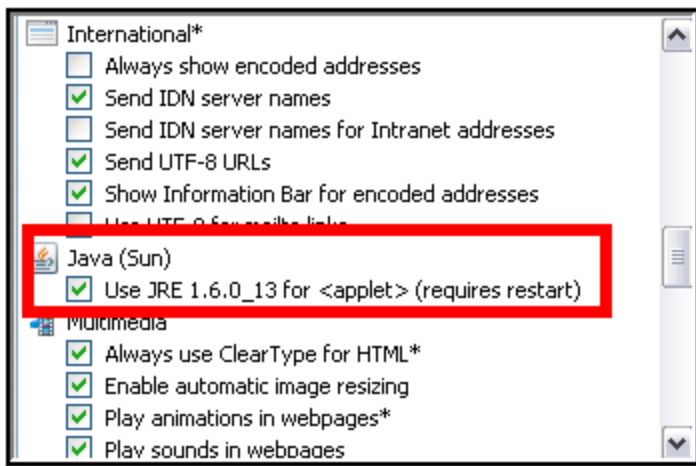


Image 9. Advanced Settings for Java (IE)

Under the Java (Sun) settings, mark the **Use JRE...** checkbox.

SSL and SmartScreen Filter

Turn on SSL and the SmartScreen Filter:



Image 10. Advanced Settings for Security (IE)

Under the Security settings:

1. Enable the **SmartScreen Filter** to protect against phishing. (This setting was turned off for the Infinite Campus zone in previous steps, but should otherwise be enabled.)
2. Mark the **Use SSL 2.0** and **Use SSL 3.0** checkboxes. Infinite Campus utilizes Secure Socket Layer encryption to protect data as it travels through the web.

Best Practice – Clear Browsing History

Periodically, Infinite Campus recommends users delete cached browsing files for improved performance and heightened security. On the General tab:

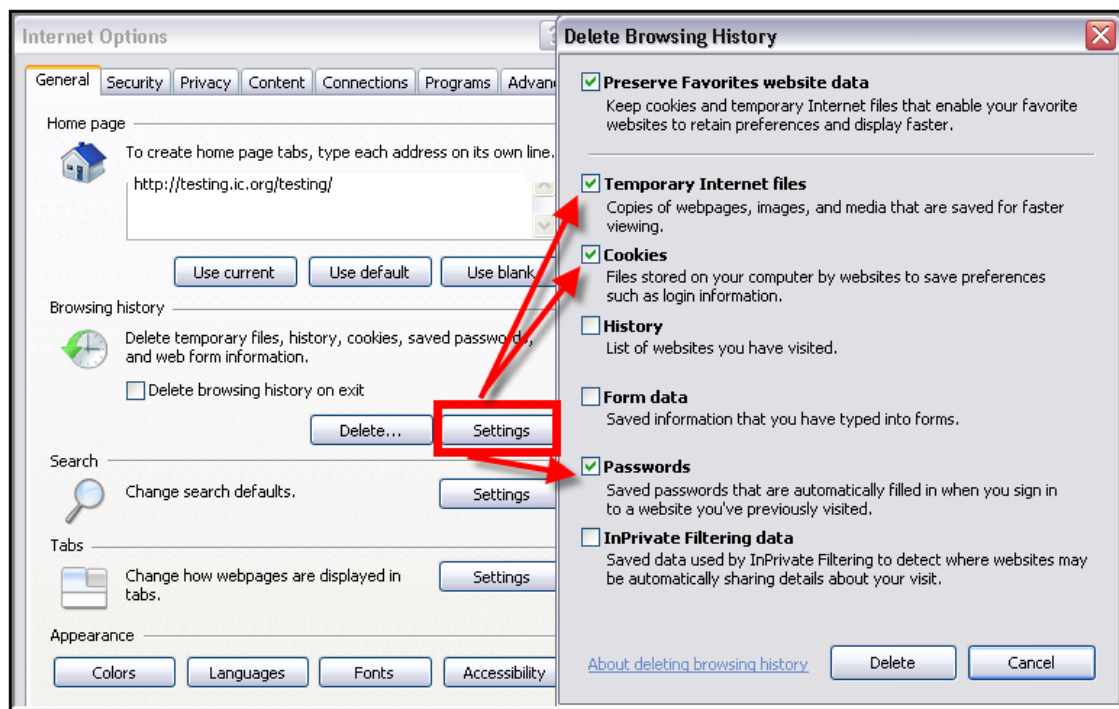



Image 11. Best Practice Clear History (IE)

1. Click the Settings button in the Browsing History section.
2. Mark (at least) the **Temporary Internet Files**, **Cookies** and **Passwords** checkboxes.
3. Click **Delete**.
4. Also click the **Delete** button in the Browsing History section.

Mozilla Firefox Settings (PC)

For the most recent browser versions that are supported in Campus, see the [Supported Platforms](#) article.

 The following settings were based off of a Firefox 3.0 configuration. The names of settings and their locations may vary slightly in other versions.

To protect security, the following browser options should be configured. To access browser settings, navigate to the Tools menu and select **Options**.

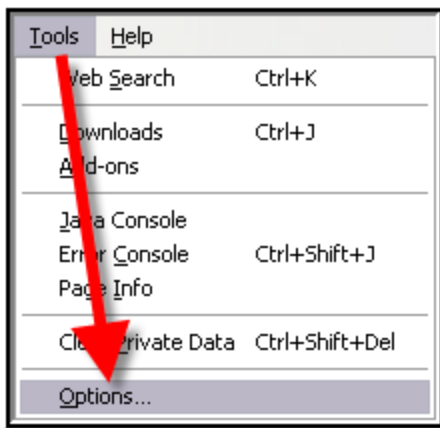


Image 12. Tools Menu (Firefox for Windows)

Content Settings

On the Content tab:

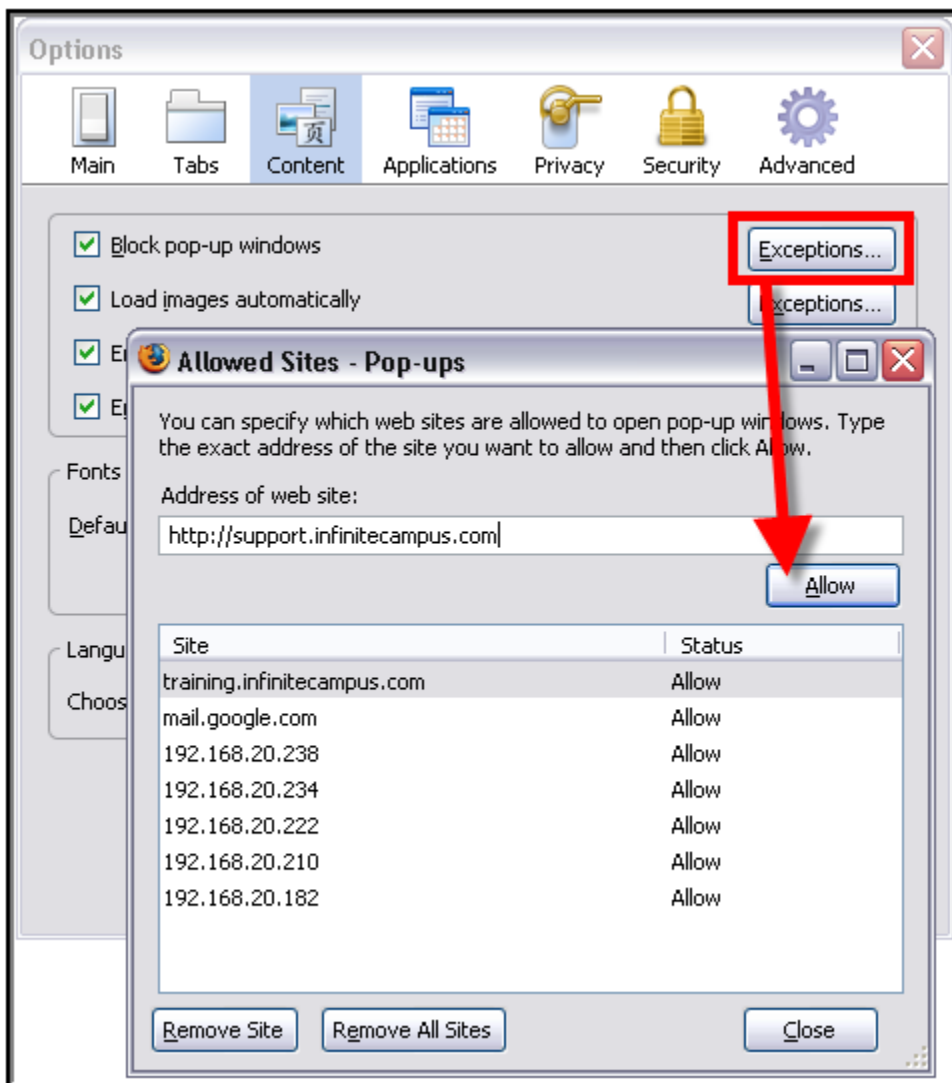


Image 13. Content Settings for Pop-Ups (Firefox for Windows)

Pop-up windows must be allowed on the Infinite Campus site in one of the following manners:

- Either the **Block Pop-Up Windows** checkbox is left unmarked, **OR**
- The **Block Pop-Up Windows** checkbox is marked, but the Infinite Campus site is on the Allowed Sites list:# **Click the *Exceptions** button.
 1. Enter the Infinite Campus site URL in the **Address of Web site** field.
 2. Click **Allow**.
 3. Click **Close**.

Privacy Settings

On the Privacy tab:

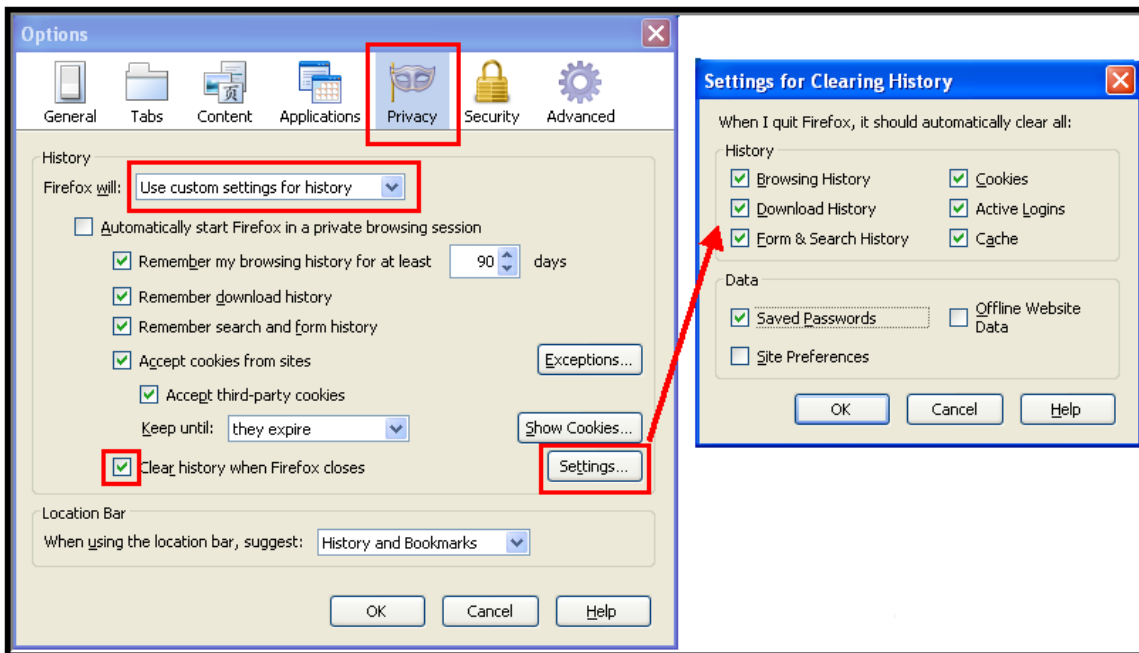


Image 14. Privacy Settings for Private Data (Firefox for Windows)

1. Select **Use custom settings for history** in the first dropdown list.
2. Mark the last checkbox, **Clear history when Firefox closes**.
3. Click the **Settings** button.
4. Mark (at least) the following checkboxes: **Form & Search History**, **Cookies**, **Cache**, and **Saved Passwords**.
5. Click **OK**.

✔ To clear history at any time, select **CTRL+Shift+Del** or select **Clear Recent History** under **Tools**.

Security Settings

On the Security tab:

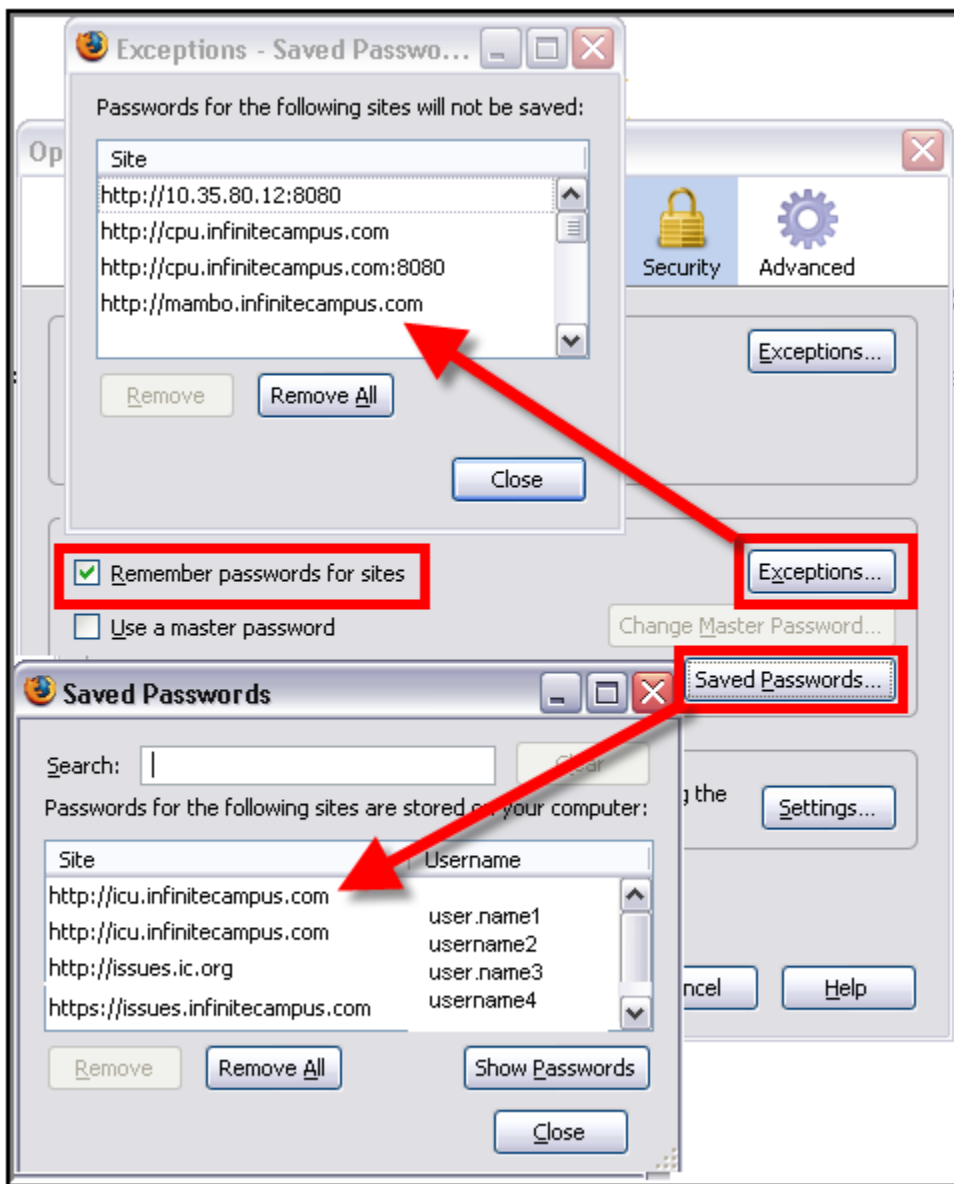


Image 15. Security Settings for Passwords (Firefox for Windows)

In the Passwords section:

- Remove the checkmark from the **Remember Passwords For Sites** checkbox, *OR*,
- If passwords should be remembered, mark the **Remember Passwords For Sites** checkbox but verify that Infinite Campus sites are on the **Exception** list:# **Click *Exceptions**.
 1. Check for Infinite Campus sites on the Exceptions window. If Infinite Campus sites do not appear:
 - a. Click **Close** on the Exceptions window.
 - b. Click the **Saved Passwords** button to see if the usernames/passwords have already been stored.
 - c. **Remove** saved usernames/passwords for Infinite Campus sites.
 - d. Click **Close**.

Advanced Network Settings

On the Advanced tab:

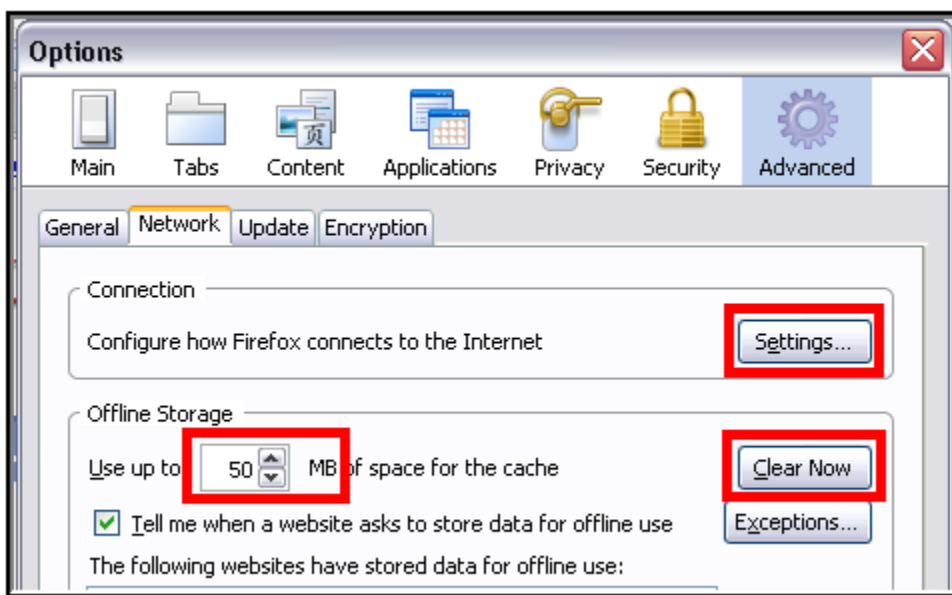


Image 16. Advanced Settings for Connections and Storage (Firefox for Windows)

1. Verify that the network Connection **Settings** reflect proper district/state setup.

✔ This setting is largely dependent on the district/state's specific network configuration.

2. Click the **Clear Now** button to clear the network cache.
3. Set the cached **MB** limit to a low number (e.g., 50 or less).

Mozilla Firefox Settings (Mac)

For the most recent browser versions that are supported in Campus, see the [Supported Platforms](#) article.

⚠ The names and locations of settings may vary slightly across versions.

To protect security, the following browser options should be configured. To access browser settings, navigate to the Firefox menu and select the **Preferences** option:

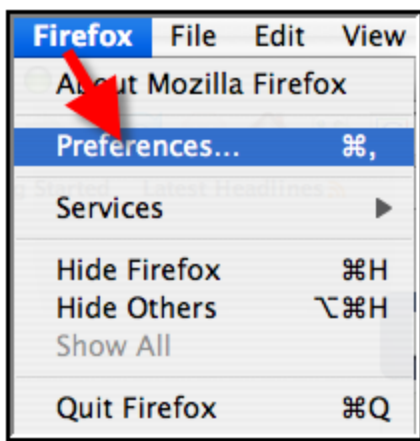


Image 17. Tools Menu (Firefox for Mac)

Content Settings

On the Content tab:

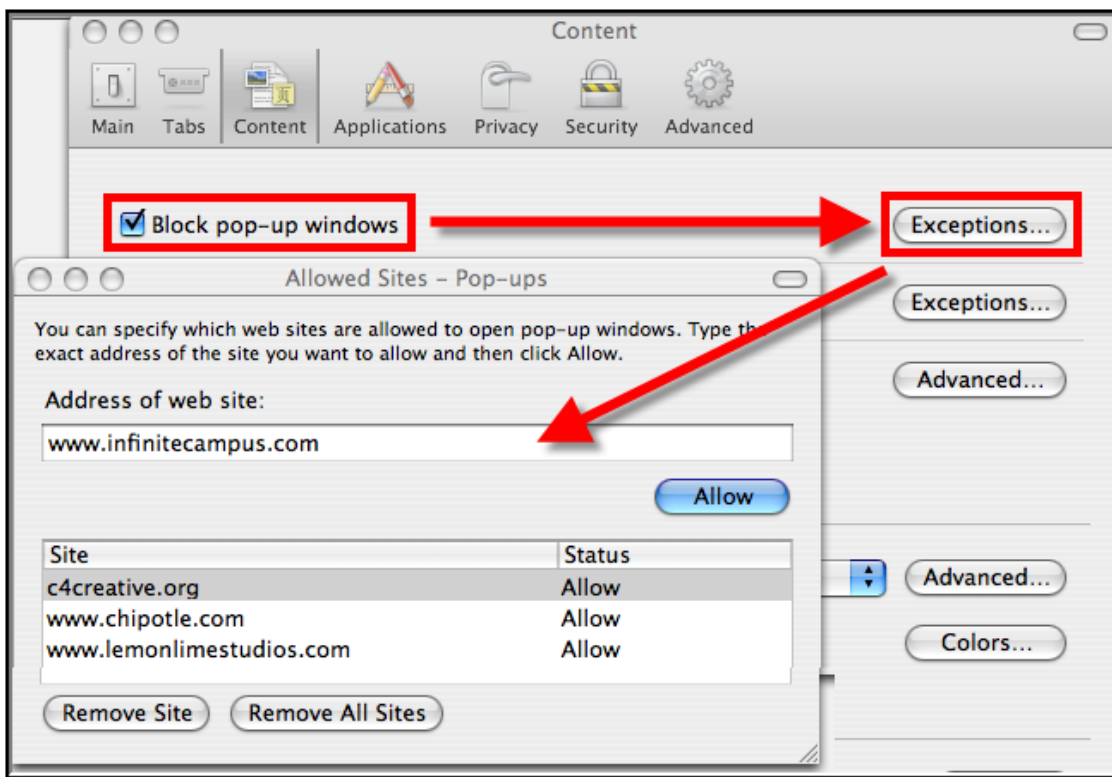


Image 18. Content Settings for Pop-ups (Firefox for Mac)

Pop-up windows must be allowed on the Infinite Campus site in one of the following manners:

- Either the **Block Pop-Up Windows** checkbox is left unmarked, *OR*
- The **Block Pop-Up Windows** checkbox is marked, but the Infinite Campus site is on the Allowed Sites list:# **Click the *Exceptions** button.
 1. Enter the Infinite Campus site URL in the **Address of Web site** field.

2. Click **Allow**.
3. Exit the window.

Advanced Network Settings

On the Advanced tab:

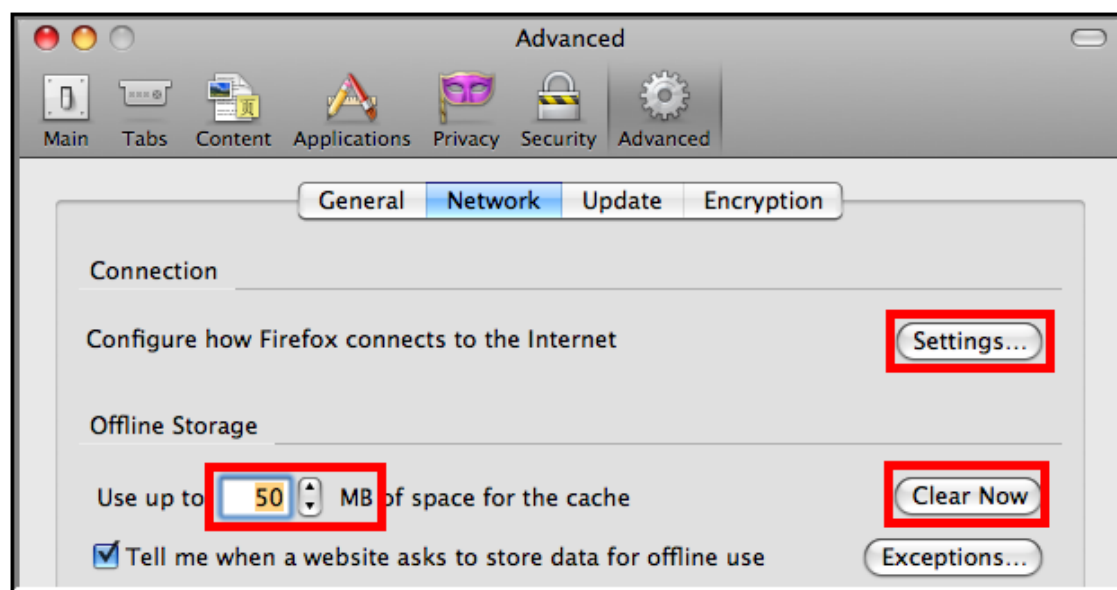


Image 19. Advanced Network Settings for Connection and Storage (Firefox for Mac)

1. Verify that the network Connection **Settings** reflect proper district/state setup.

✔ This setting is largely dependent on the district/state's specific network configuration.

2. Click the **Clear Now** button to clear the network cache.
3. Set the cached **MB** limit to a low number (e.g., 50 or less).

Privacy Settings

On the Privacy tab:

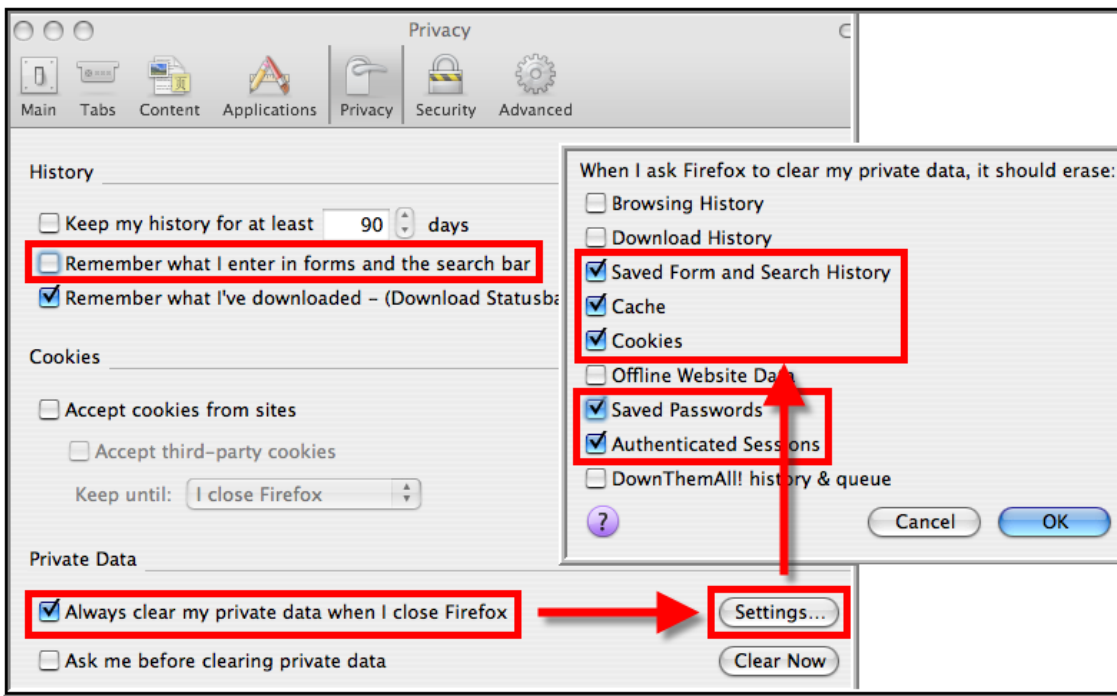


Image 20. Privacy Settings for History and Private Data (Firefox for Mac)

1. Set the Private Data settings to **Always Clear Private Data** on browser close.
2. Click **Settings**.
3. Mark at least the **Cache, Cookies, Saved Passwords** and **Authenticated Sessions** checkboxes.
4. Click **OK**.

✔ Click the **Clear Now** button at any time.

Security Settings

On the Security Tab:

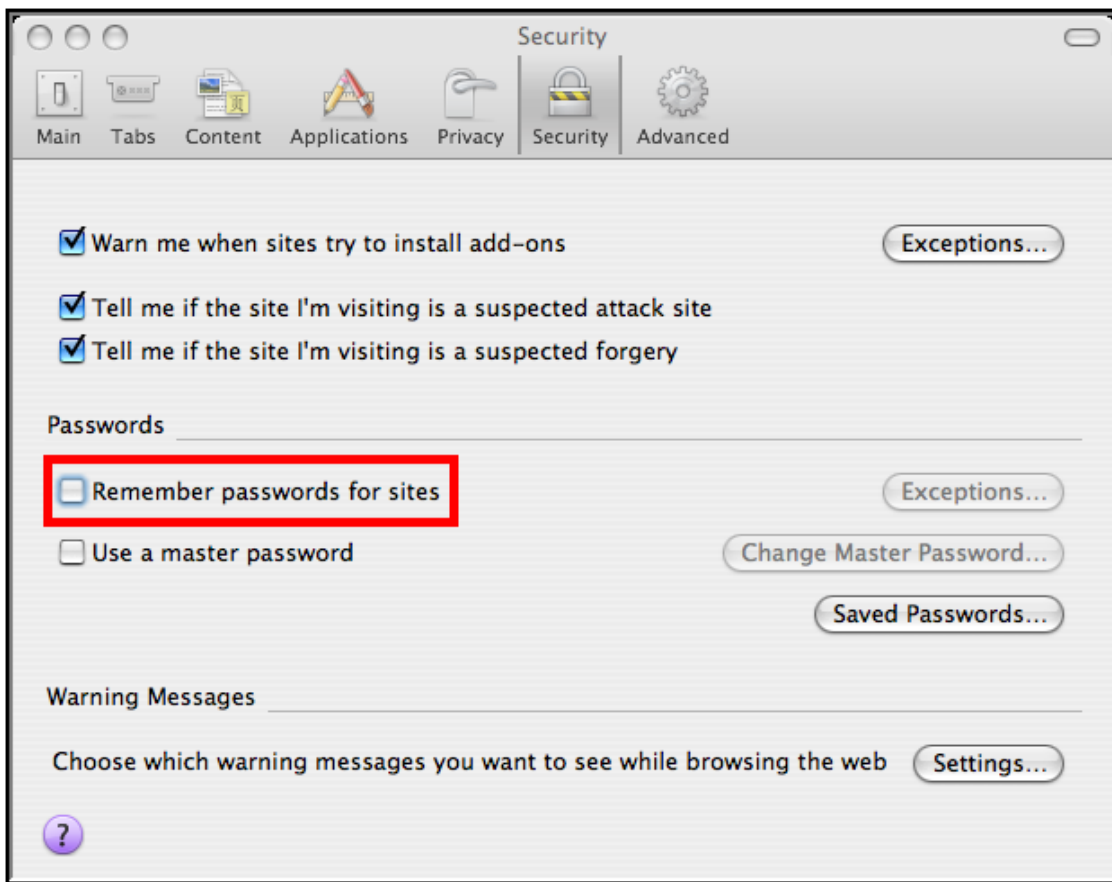



Image 21. Security Settings for Passwords (Firefox for Mac)

- Remove checkmark from the **Remember Passwords for Sites** checkbox, **OR**,
- If passwords should be remembered, mark the **Remember Passwords For Sites** checkbox but verify that Infinite Campus sites are on the **Exception** list:# **Click *Exceptions**.
 1. Check for Infinite Campus sites on the Exceptions window. If Infinite Campus sites do not appear:
 - a. Close the Exceptions window.
 - b. Click the **Saved Passwords** button to see if the usernames/passwords have already been stored.
 - c. **Remove** saved usernames/passwords for Infinite Campus sites.
 - d. Close the Saved Passwords window.

Safari Settings (Mac)

For the most recent browser versions that are supported in Campus, see the [Supported Platforms](#) article.

 The names and locations of settings may vary slightly across versions.

Enabling 32-bit Mode

Infinite Campus recommends operating Safari in 32-bit mode to allow saving of FDF forms in Campus with Adobe Reader.

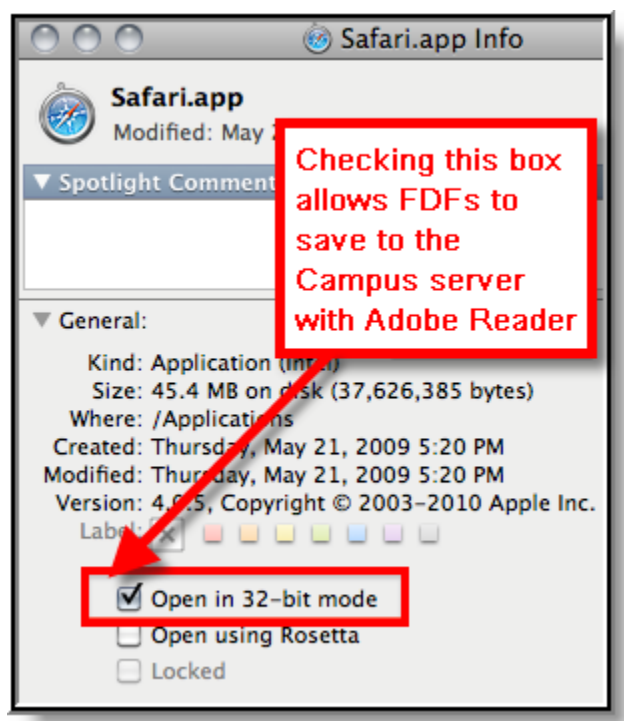


Image 22. Safari 32-bit Mode

1. Close all open Safari browsers.
2. Open a new **Finder** window.
3. Navigate to the **Applications** folder.
4. Select **Safari**.
5. Go to the **File** menu.
6. Select **Get Info**.
7. In the Safari Info window, open the **General** section.
8. Select the **Open in 32-bit Mode** checkbox.
9. Close the Safari Info window. Upon re-opening Safari, 32-bit mode will be enabled.

To protect security, the following browser options should be configured on the Safari menu:

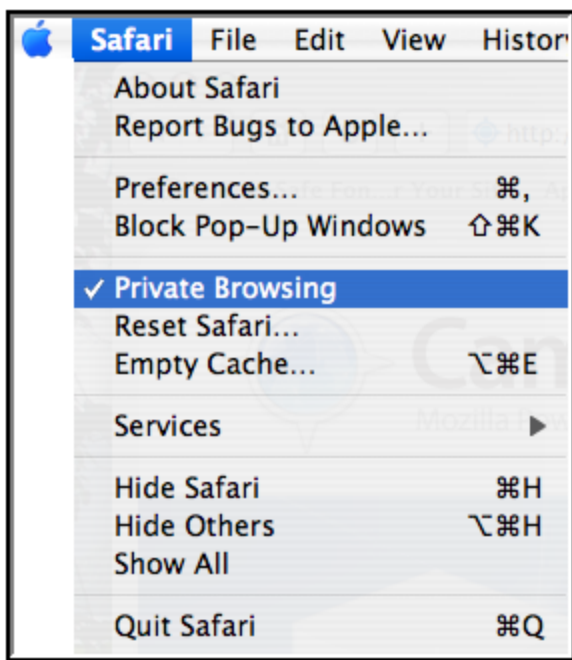


Image 23. Security Settings for Browsing (Safari)

1. Turn on **Private Browsing** to erase cookies, auto-fill items and other cached information.
2. Infinite Campus recommends disabling the **Block Pop-up Windows** setting, so Infinite Campus pop-ups will be allowed.

✔ In Safari, pop-ups are either allowed or disabled. Unlike other browsers, Safari does not allow site-by-site control of pop-ups.

Preferences

On the Safari menu (shown in *Image 23*), select the **Preferences** option. On the AutoFill tab:

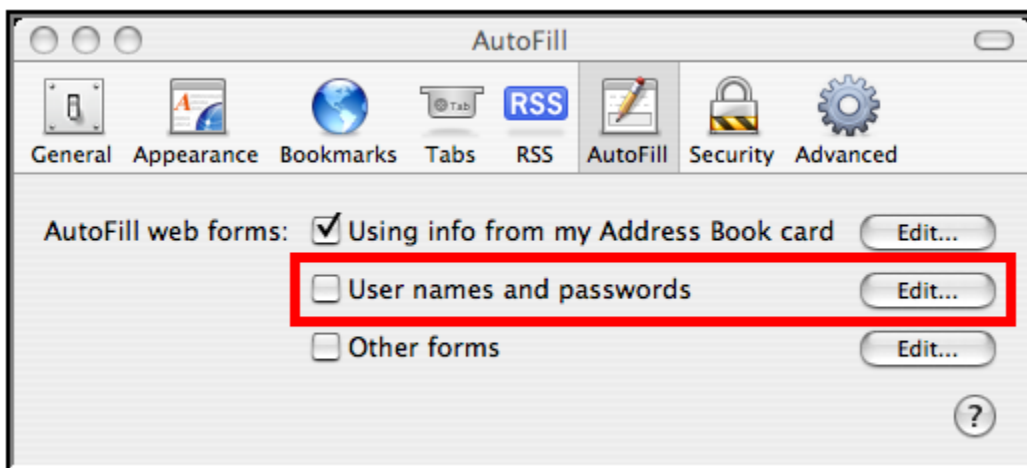


Image 24. Preference Settings for AutoFill (Safari)

Remove the checkmark from the auto-filling **Username** and **password** checkbox.

Previous Versions

- [TR_BrowserConfig_0809.pdf](#)